



Agency for  
Science, Technology  
and Research

CREATING GROWTH, ENHANCING LIVES

# Introduction to A\*STAR's Future of Manufacturing Strategy

Nicholas Yeo

Technical Director, Smart Manufacturing and Advanced Robotic Applications

15 September 2017

# Tech Labs: Features of Model Factories in A\*STAR

## 1 Experiential Learning Environment

Companies will be able to experience and learn the benefits of new and advanced technologies to their manufacturing processes and operations.

## 2 Improving Production Processes

The dynamic production environment in the Model Factories will allow companies to optimise and improve their production processes.

## 3 Co-Innovation Platform

Test bedding facilities will allow the ecosystem of research performers, technology providers and end-users to co-create and test new innovations.



**MODEL FACTORIES  
@ SIMTech and @ARTC**

Soft launch: Q4 2017 & Q1 2018



# Introduction of Model Factory @ ARTC

Model Factory @ ARTC, is a public-private partnership programme to co-develop a model factory and to collaborate and develop Future of Manufacturing (FoM) technologies, based on real applications in advanced manufacturing and remanufacturing



Accelerate adoption of **Digital Technologies** across key industries in Singapore and create a marketplace for digital technology and applications, with unique reach in Asia and beyond



Generate potential **intellectual property** portfolio in Industry 4.0 technologies

A\*STAR's RIs & IHL



Provide a **training ground** for future engineers and create a digital culture for knowledge management

Technology Partners & Industry Members



Foster **industry alignment** by Identifying list of immediate outcomes from the development



To jointly develop a **test bed model** on smart factory where heavy equipment industry players (aerospace, marine, machinery) can validate and test new concepts for the next innovation of manufacturing

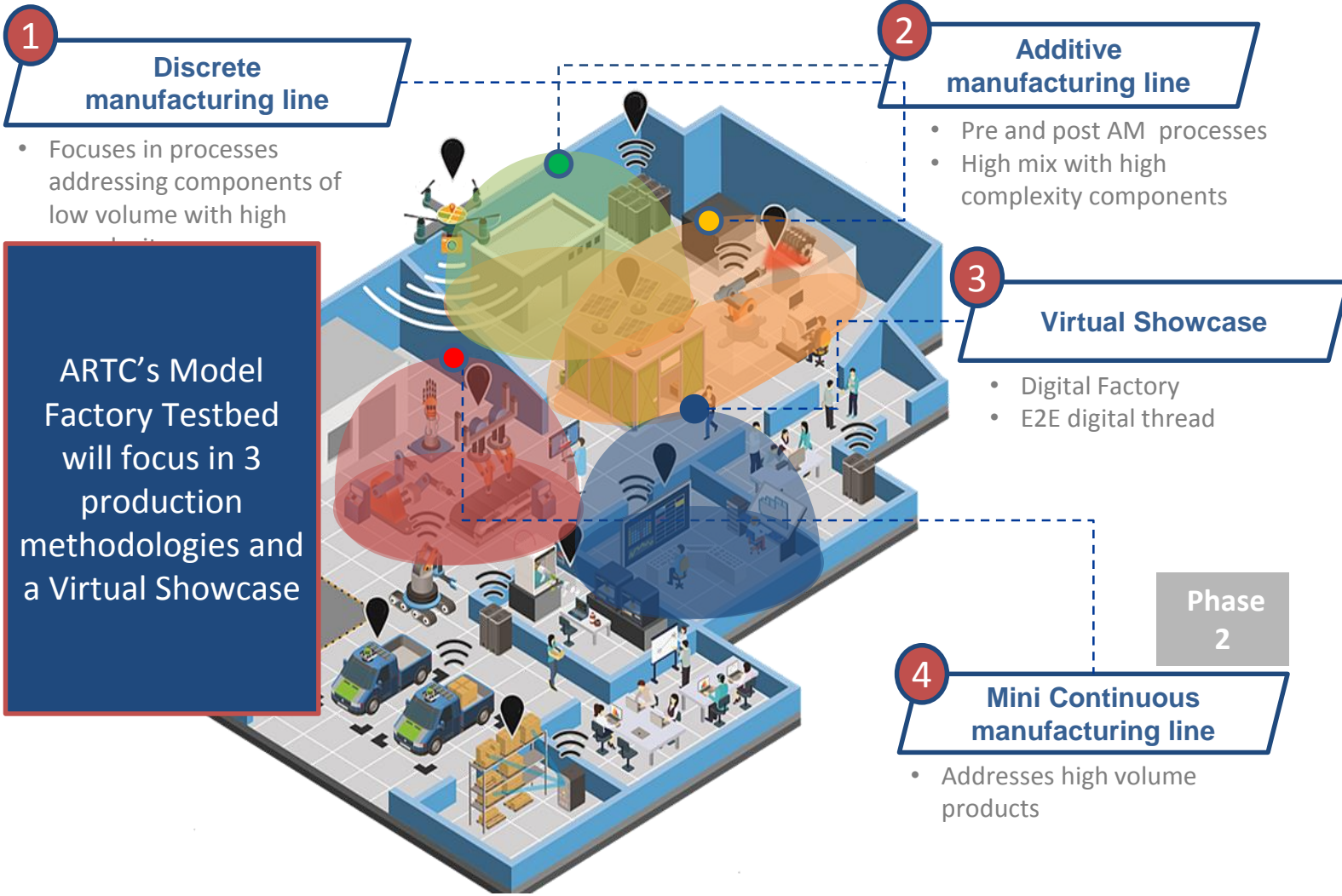
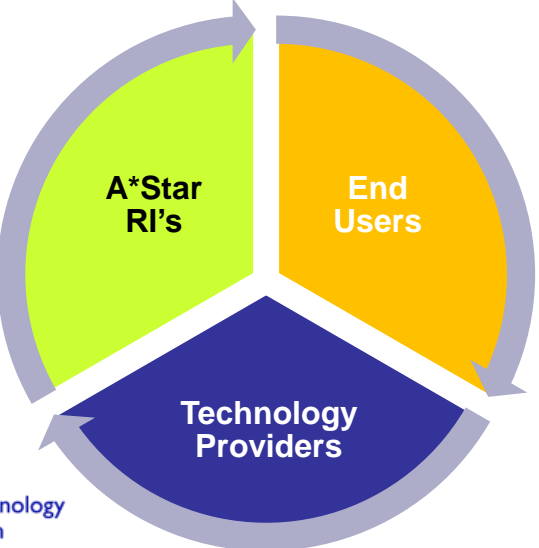


Regular **sharing of best practices** to facilitate value capture through review of latest learning



# Testbed Strategy and Focus area

- Focus on industry challenges with an end solution in mind
- Use a structured approach and building blocks to develop complex solutions
- Involve
  - Integration of several technologies
  - Collaborative partnership to achieve common goals



**Our Model: Learn fast and Fail fast to accelerate industry adoption**